



# North Central Phoenix

## HOMEOWNERS ASSOCIATION

Protecting North Central for Over 40 Years

NCPHA Board of Directors

**President**

Mary Crozier

**Vice President**

Mark Ortman

**Treasurer**

Tyler Estes

**President Emeritus**

Anne Ender

Jim Hinton

Shelley Caniglia

John Fournier

Samantha Hirsch

Scott Mardian

Rick Ramella

David Sorensen

**Contact us:**

NCPHA

24 W. Camelback Road

#A560

Phoenix, AZ 85013-1520

Www.ncpha.org

Email us at

info@ncpha.org

Follow us on

Facebook:



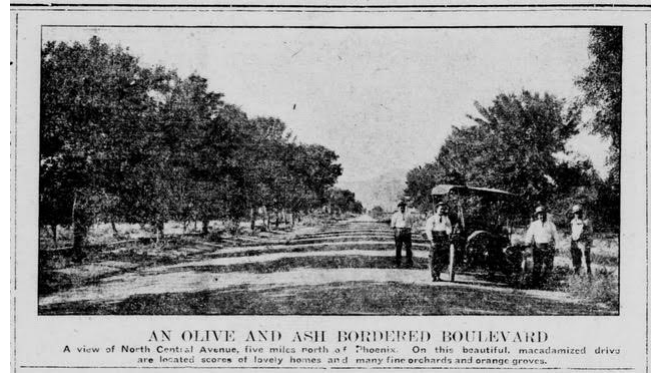
/northcentralphoenix-homeownersassociation

### Letter from the Outgoing President, Anne Ender

During my tenure as the President of the NCPHA, we have faced a variety of issues, situations, successes and disappointments. For me, none has been greater than **opposing the demolition and supporting historic designation** of the McElroy-Young House.

It is a privilege to work with and be educated by the skilled City of Phoenix Historic Preservation Department. I'm grateful for their dedication to save this North Central treasure. I have also had the pleasure of meeting, communicating and participating with all of you, the North Central community. Your desire to maintain and protect the character of this neighborhood has been nothing less than inspiring.

So as I wind down my term as President, I take with me a valuable lesson, that preservation is not just about a historic home, rather that it includes public safety (crime, traffic, homelessness, fire); our environment, the tree canopy (17%) that contributes to the cooling of the heat island (10°) in North Central; the Historic Streetscape (see photo); Murphy's Bridle Path and appropriate zoning.



And the realization that it does **"take a village"**, a community of first responders, environmentalists, arborists, businesses, government representatives and employees, and volunteers such as our Board of Directors. Last and most important, you, the residents of one of the City's most desired neighborhoods.

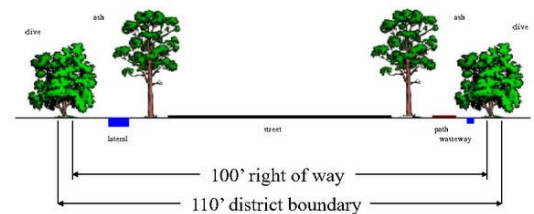
Thank you all for your support of me and the

### The Historic Trees on North Central

North Central Avenue and the Murphy Bridle Path share in the history of the neighborhood. From Bethany Home to Northern, rows of olive and ash trees line the street.

The Murphy Bridle Path on the east and a U.S. Bureau of Reclamation irrigation lateral on the west are all part of the city, state and national historical protective overlay.

North Central Avenue Streetscape  
Cross Section View



NOTE: Drawing not to scale

The olive trees were planted by W.J. Murphy when the original Orangewood subdivision was created sometime between 1905-1910. The Arizona Ash trees are not the original trees, which were planted in the early 1900s. Those were replaced by Aleppo pines in 1963. The trees we see today were planted in 1972 because the pines were not favored by residents.

We are always looking for funds and grants to help replace the diseased and damaged ash trees. Currently, the City of Phoenix has a limited budget to replace trees. The NCPHA initiated the Beautify North Central program a few years ago. For a donation of \$500.00, the City of Phoenix will purchase, plant and maintain an ash tree on North Central. Your donation can be made via PayPal or a written check to the NCPHA.

## Community

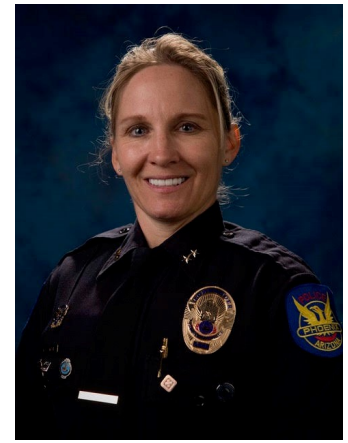
The Desert Horizon Police Precinct is staffed by Phoenix Police Department employees which is located at 16030 N. 56 th Street. The Desert Horizon Precinct is also responsible for the Sunnyslope Neighborhood Police Station which is located at 750 West Peoria Avenue. Officers are not usually in the station for contact; they are dispatched through the Police Communications operators by calling Crime Stop at (602\_262-6151. Police Aides are only assigned to the Desert Horizon Precinct and are. Available to answer the telephone and provide general information to walk-in visitors generally from 6:00 a.m. to 4:00 p.m. (excluding holidays).

Desert Horizon Precinct serves approximately 74.92 square miles with an approximate population of 311,700 residents.

**Community Action Sergeant**  
60X Sgt. Andrea Alexander  
602-534-1896

**Community Action Officers**  
Officer Mario Lozoya  
602-534-1745

**Programs Coordinator**  
Officer Matt Makinster  
602-495-5634



Aimee Smith, Commander  
Desert Horizon Precinct  
Phoenix Police Department

## Holiday Safety Tips

- Remember there is **NO PARKING** on either side of North Central Avenue from Missouri to Northern. Please have your guests park on a side street.
- Please do not drink and drive. Have a designated driver or use a ride share ~ Drink responsibly
- Obey the speed limits and proceed slowly through the intersections. Everyone is in a hurry this year, but be the one who is kind and respectful on the road.
- No parking on the Murphy Bridle Path. This is a public park and heavily used by pedestrians.
- Have your service personnel and guests park on side streets.
- If you have a live tree, please keep it watered to prevent fire.

## Healthy Giving

Homelessness has increased 59 % in Phoenix from 2015 to 2017.

Our community has so many generous families and individuals who want to give food, clothing or money to those experiencing homelessness. Their hearts are in the right place. Experts will tell you that one-off donations, such as giving cash or a meal to someone on the street corner does not help the individual or the community. Actually, these kinds of donations have negative unintended consequences.

- Healthy Giving is **NOT** donating to those on street corners or undesignated public places.
- Healthy Giving is **NOT** diverting people from the services they need
- Healthy Giving is **NOT** creating a mess that requires your local government to pay for extra clean-up services

### PLEASE JOIN US IN BEING HEALTHY GIVERS

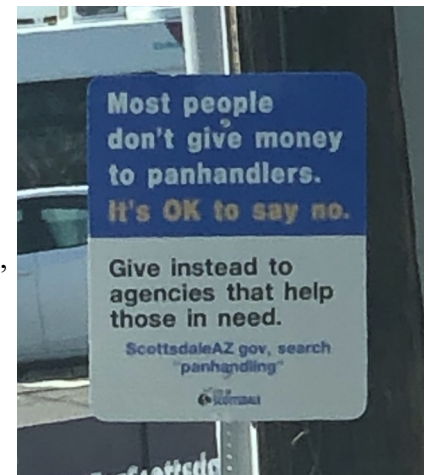
Healthy givers understand that we must consider not only the long-term needs of the individual, but also the impact of our giving on the environment and the community at large.

In an effort to better understand and to encourage best practices to help with this complex problem, the NCPHA's goal is to educate the North Central community by encouraging our residents to be Healthy Givers. We will work hand in hand with trusted organizations and service providers who are committed to improving the lives of the homeless long term. We are asking you to help be part of the solution to homelessness.

The next time you want to hand a few dollars to the person with a sign on the corner, please **DON'T**. Instead, please consider the following:

- Healthy Giving **IS** making a donation of time or treasure to the Healthy Giving Council. <https://www.givesmartaz.org/about>
- Healthy Giving **IS** making a donation to the NCPHA through PayPal on our website and note the donation as **HEALTHY GIVING**. We will collect those funds and make a donation from our neighborhood to the Healthy Giving Council.
- Healthy Giving **IS** giving to your local church faith community and support what they are already doing.

PLEASE JOIN THE NCPHA AND COMMIT TO BEING A HEALTHY GIVING NEIGHBORHOOD.



## Tree Update

The City of Phoenix Street Transportation Landscape Maintenance Supervisor and staff from the Parks & Recreation Department met on Central Avenue and Glendale to inspect the dead and dying trees.



These trees are quite old, making them more susceptible to stress, disease and environmental changes. This particular variety of ash tree isn't well adapted to deal with our longer and hotter summers coupled with the lighter monsoonal rainfall of recent years.

Although we were unable to determine exactly why these trees succumbed, we believe a combination of age, disease and characteristics of the variety of ash are all factors in their demise.

The Parks Department will be removing the three dead trees just south of Glendale Avenue. Street Transportation will replace them with a similar variety that is better suited to today's environment. We will then

team up with Parks on a pilot project to see if we can minimize the impact of the eventual loss of the row of mature trees.

Street Transportation will plant additional trees between the mature trees south to Flynn Lane. This will allow the new trees to get established over the next several years and get to a decent size before the mature trees reach the end of their lives.

### Important Contact Information

Mayor Kate Gallego  
602-262-7111  
Mayor.gallego@phoenix.gov

Sal DiCiccio, District 6  
602-262-7491

Debra Stark, District 3  
602-262-7441  
Council.district.3@phoenix.gov

Police/Fire Emergency  
911

Police Non-Emergency  
602-262-6151

Phoenix C.A.R.E.S  
602-262-6251

Neighborhood Services  
602-534-4444

Graffiti Removal  
602-534-4444

Blight or Zoning Violations  
602-262-7844

Poison Control Center  
1-800-222-1222

Animal Control  
602-506-7387

## 2019 in Review

As 2019 winds down, here are some the notable accomplishments we've experienced this year:

- Sponsored our first Coffee with a Cop
- Added 3 new board members
- Worked diligently on the following zoning cases:
  - \* Flynn 720 Self Storage facility
  - \* 7th Street Self Storage facility
  - \* Supported the City's initiative for a historic overlay at 7019 N. Central Ave.
  - \* Opposed the reduced setbacks at 130 E. Missouri
- Conducted our Annual Meeting in September
- Donated money to the City of Phoenix and worked with the city on a pilot program for tree replacement
- Created and sent Welcome to the Neighborhood packets to new property owners
- Developed the Healthy Giving campaign
- Designed and produced NCPHA hats
- Recipient of the 2019 City of Phoenix Police Grant
- Designed, printed and distributed 2 neighborhood-wide newsletters



Dr. and Mrs. Jerry Caniglia on Safari at the Masai Mara Game Park in Kenya sporting their NCPHA hats!



**North Central Phoenix**  
HOMEOWNERS ASSOCIATION

24 West Camelback Road—A560  
Phoenix, AZ 85013-1520

---

## HELP SUPPORT THE NCPHA

Anyone who lives within the NCPHA boundaries\* is considered a member of our volunteer organization. We ask that each property owner pay a **minimum of \$25.00 for annual dues (January ~ December)**. The fees are necessary to maintain the residential zoning and fight inappropriate commercial development, therefore we appreciate any amount of generous support. For updates on zoning cases in our neighborhood, please visit [www.ncpha.org](http://www.ncpha.org)

\*Northern side of Missouri to the southern side of Northern; the east side of 7th Avenue to the west side of 7th Street

Two ways to pay:

Go online to [www.ncpha.org](http://www.ncpha.org) and click the **PAY DUES** tab on the Home page which will take you to PayPal. Fill out the information below and **mail your check, payable to NCPHA** to:

NCPHA  
24 W. Camelback Rd #A560  
Phoenix, Arizona 85013-1520

Name \_\_\_\_\_ Email \_\_\_\_\_

Address \_\_\_\_\_

Amount of Dues (min of \$25.00) \_\_\_\_\_

Other Donation (Beautify North Central, Healthy Giving) \_\_\_\_\_